

Why choose Farrat Captive Jackmounts?

Farrat Captive Jackmounts offer a simple and economical means of supporting, levelling and vibration damping machinery suited to levelling screw support.

Manufactured by Farrat they have been used for decades in thousands of applications around the world.

Advantages of using Captive Jackmounts:

- Pendulum screw tilts up to 5° Tilt in all directions.
- Enables excellent, stable seating on uneven floors.
- High vibration damping to improve machine performance, reduce machine wear and lower noise levels.
- Reduce shock transmission to and from the machine.
- Protect floors and surroundings from the harmful effects of vibration.
- High friction grip so machines don't move.
- No bolting down or grouting for fast and economical installation and relocation.

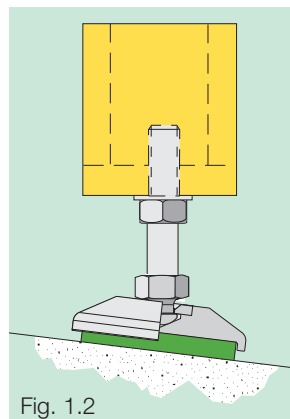
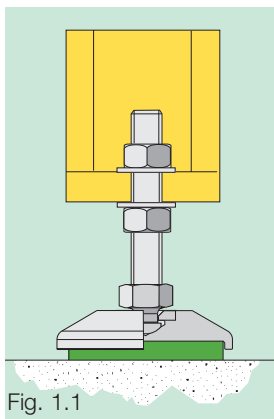
Typical Applications:

- Measuring, test and optical equipment.
- Laboratory equipment.
- Scanning and X-ray machines.
- Conveyors.
- Injection moulding machines.
- Packaging machines.
- General machine tools.
- Printing machines.
- Food, drink and pharmaceutical machines and equipment.

JMP - Bright zinc plated mild steel mounts



JMSP - Stainless steel mounts for food, drink and chemical industries etc.

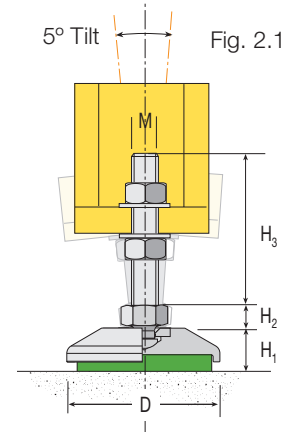


Diesel engine cylinder block transfer line installed on Jackmounts.

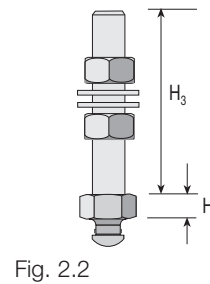
Please contact Farrat for more information and technical specification assistance.
 Tel: +44 (0) 161 924 1600
 Email: sales@farrat.com

Typical Applications & Appropriate Anti Vibration (AV) Pad Grade				
Mounting Requirement	Typical Applications	AV Pad Grade (To be specified)	AV Pad Material	AV Pad Thickness (mm)
Soft	Vibration sensitive equipment e.g. Measuring, Test, Optical, Laboratory Equipment	-50	NBR50-10P2	10
Elastic	Active Shock & Vibration e.g. Injection Moulders, Packaging Machines	-70	NBR70-10P2	10
Stiff	High stiffness with damping e.g. Machine Tools, Printing Machines	-80	NBR80-10P2	10

Load Capacities and Dimensions								
Model JMP	Maximum Loads per Mount for AV Pad Grades (kg)			Dimensions (mm)		Tilt in all Directions	Base Material	Unit Mass (kg)
	-50	-70	-80	D	H ₁			
60*	150	300	400	70	25	5°	Cast Iron 250	0.30
80*	250	500	800	90	25	5°	Cast Iron 250	0.60
100*	400	800	1200	110	25	5°	Cast Iron 250	0.90
120*	550	1100	1700	130	27	5°	Cast Iron 250	1.45
130*	650	1300	2000	140	27	5°	Cast Iron 250	1.65
170*	1100	2200	3400	180	27	5°	Cast Iron 250	3.05
JMSP	-50	-70	-80	D	H ₁			
60*	150	300	400	60	25	5°	Stainless Steel 304	0.30
80*	250	500	800	80	25	5°	Stainless Steel 304	0.60
100*	400	800	1200	100	25	5°	Stainless Steel 304	0.90



Pendulum Screw Dimensions						
PSP Bright Zinc Plated Mild Steel Pendulum Screws (with 2 Hex. Nuts & 2 Washers)						
PSS Stainless Steel 304 Pendulum Screws (with 2 Hex. Nuts & 2 Washers)						
Screw Size and Pitch		Spanner Required A/F	H ₂ (mm)	H ₃ Screw Length (mm)		
PSP or PSS	M10x1.5	17	21	94	-	-
PSP or PSS	M12x1.75	19	23	90	140	-
PSP or PSS	M16x2	24	25	90	140	-
PSP or PSS	M20x2.5	30	32	90	140	-
PSP or PSS	M24x3	19	23	-	150	200



Order examples	
* Specify Vibration damping grades e.g. -50 and fixing e.g. PSP M16x2	
JMP100-50 + PSP M16x2x140	Green JMP + Bright Zinc Plated Mild Steel M16 Pendulum Screw Assembly
JMP80-80 BZP + PSP M20x2.5x140	Bright Zinc Plated JMP + Stainless Steel M20 Pendulum Screw Assembly
JMSP60-70 + PSS M10x1.5x94	Stainless Steel JMS-P + Stainless Steel M10 Pendulum Screw Assembly

Finishes to JMP Bases			Suffix
Standard	Green	RAL 6011	
To order	BZP	Bright Zinc Plated	BZP

Alternative variants are available on request.



Injection moulding machine installed on Jackmounts.