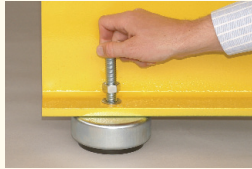


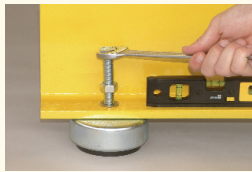


Hexagonal head (H)

Place machine on temporary packing e.g. blocks of wood about 10mm thicker than the minimum height of selected Isomount. Place mounts under machine base, at bolt hole positions.



Place steel washer on top of machine base over hole and pass adjusting screw into threaded hole in mount until the Isomount touches the machine.



With all the mounts installed, tighten up each adjusting screw clockwise until each Isomount starts to take load. Take away packings so that the machine rests on Isomount. Machines can now be levelled using the Isomount adjusting screws. NOTE: If the machine is heavy, only make small upward movements at a time or if necessary assist upward movement with jack.



Once levelled, tighten up locking nuts on adjusting screws. Remember to undo locknuts before re-adjusting mounts.

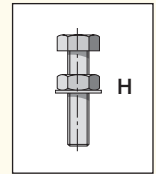
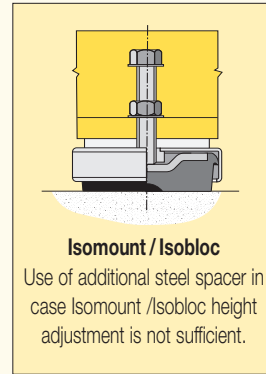
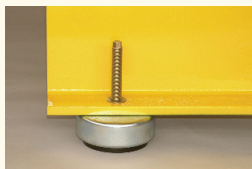


Fig. 4.01



Squarehead (SH)

Place machine on temporary packing e.g. blocks of wood about 10mm thicker than the minimum height of selected Isomount. Place mounts under machine base, at bolt hole positions.



Lower machine onto the Isomount so that the bolt passes through the bolt hole.



With all the mounts installed, tighten up each adjusting screw clockwise until each Isomount starts to take load. Take away packings so that the machine rests on Isomount. Machines can now be levelled using the Isomount adjusting screws. NOTE: If the machine is heavy, only make small upward movements at a time or if necessary assist upward movement with jack.



Once levelled, tighten up locking nuts on adjusting screws. Remember to undo locknuts before re-adjusting mounts.

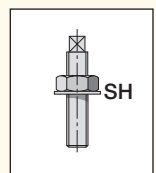
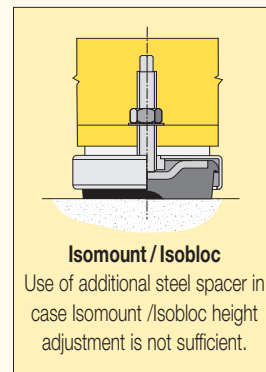


Fig. 4.02

Check the level of the machine after 24hrs operation, and re-level if necessary. Check machine level periodically according to machine manufacturer's recommendations or at least every 6 months, whichever is sooner.