

Certificate

Certified Passive House Component

for cool, temperate climate, valid until 31.12.2020

Category: **Balcony connection**
Slab thickness 160 - 250 mm
Manufacturer: **Farrat Isolevel Limited**
Altrincham, UK
Product name: **FARRAT TBK**

The following criteria were used in awarding this certificate:

Efficiency Criterion

In two typical applications*, the construction fulfills the requirement of

$$\Delta U_{WB} \leq 0.010 \text{ W/(m}^2\text{K)}$$

Comfort Criterion

The inner surface must be warm enough to prevent mould as well as uncomfortable down-draught and radiation losses.

$$\theta_{i,\min} \geq 17^\circ\text{C}$$

Following heat transmission coefficients X [W/K] have been determined:

Komponente	Wärmebrücken-verlustkoeffizient X [W/K]	Max. Anzahl/m [St./m]	Min. Abstand [m]
FARRAT TBK** mit IPE 140	0,132	1,85	0,54

Efficiency Criterion - Low Energy Component

In two typical applications*, the construction fulfills the requirement of

$$\Delta U_{WB} \leq 0,025 \text{ W/(m}^2\text{K)}$$

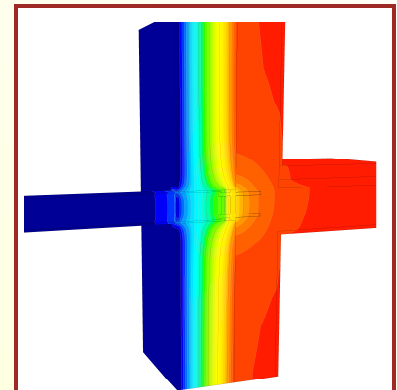
Component	Thermal bridge coefficient X [W/K]	Max. amount/m [St./m]	Min. distance [m]
FARRAT TBK** with IPE 140	0.132	1.85	0.54

* The criterion was validated on both, a row house and a apartment dwelling.

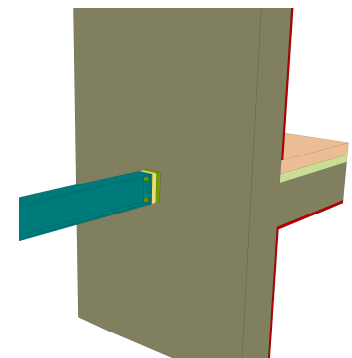
(according to criteria "balcony connection" v2.1.1)

** applicable for 25 mm plate thickness

www.passivehouse.com



Isothermal map of the FARRAT TBK with IPE 140



Representation of the FARRAT TBK with IPE 140

cool, temperate climate



CERTIFIED COMPONENT

Passive House Institute